

> LIST OF PRODUCTS & STANDARDS

PRODUCTS	LEBANESE STANDARDS
TOYS Electrical toys (From small button cell operated lights to large sit on cars powered by large lead-acid cells)	NL 407
HOUSEHOLD ELECTRICAL APPLIANCES Cooking and kitchen appliances such as hoods, mixers, commercial ovens/ranges/grills, spin extractors, dishwashers, hobs, ovens, grills, toasters, microwave ovens, refrigerating appliances... Cleaning appliances such as vacuum cleaners, washing machines, floor Treatment Machines... Other household appliances such as appliances for skin or Hair care, UV appliances, irons, tumble dryers, sewing machines, massage appliances, electric toothbrushes, water heaters, air-Conditioners, room heaters, fans... (Excluding medical devices, computers and tools)	NL 101 - 1 And applicable part 2 (NL 101-2-x) when required
AUDIO_VIDEO APPARATUS Audio, Video And Similar Electronic Apparatus (Television, Hifi, radios, recorders, video games, cd/tape/dvd players, audio amplifiers...)	NL 167
Transformers / Power supplies / Chargers / adapters Battery Chargers Power Transformers, Power Adapters, Power Supply Units and Similar	NL101-2-29 NL216 series
LAMPS (Light bulbs) Tungsten Lamps for household use	NL96-1 NL95
BATTERIES Primary Batteries Lead -Acid Starter Batteries Lead -Acid Batteries (except starter batteries)	NL504 series NL217 series NL 61056-1
CERAMIC TILES Ceramic tiles	NL 102 + one of NL 109, NL 113, NL115, NL116, NL117, NL118, NL119, NL120, NL121 or NL122
COSMETICS	NL 14, NL15, NL 16, NL 17, NL 18, NL 19
ALKYD PAINTS Except decorative primer paints	LS 94, LS 92, LS 93, LS 90, LS 91, LS 88, LS 89
DETERGENTS (powder) Synthetic washing powder	NL 218
FLOAT GLASS Basic soda lime silicate glass products Laminated glass and laminated safety glass	NL EN 572-(1,2,3,4,5,6,7) NL EN ISO 12543-(2, 3, 5, 6)

*Conformity to other international/Lebanese standards may be accepted
List of products extracted from decrees 7172, 7173, 7174, 7175, 7176, 12365, 12381, 14422, 15439

For further information, please contact :

IRI
Lebanese University Campus
Hadath (Baabda)
Tel/Fax: 05 467831/2/3/4/5/6/7
or
BIVAC Liaison Office Beirut
Tel: 01251200 Fax: 01257200
www.bivaclebanon.com

20070604-2

Conformity Certification in Lebanon Destination verification

Guide to Importers

On August 11th 2004, the Industrial Research Institute (IRI) of Lebanon began implementing decrees 7176, 12365, 12381.

Importers have the choice between a destination verification programme or a pre-shipment verification programme. These Programmes are intended to provide safety for citizens of Lebanon and improve environmental health protection.

Destination verification programme requires the testing of products on arrival and before customs clearance.

Upon conformity of the goods, IRI can issue the required conformity certificate.

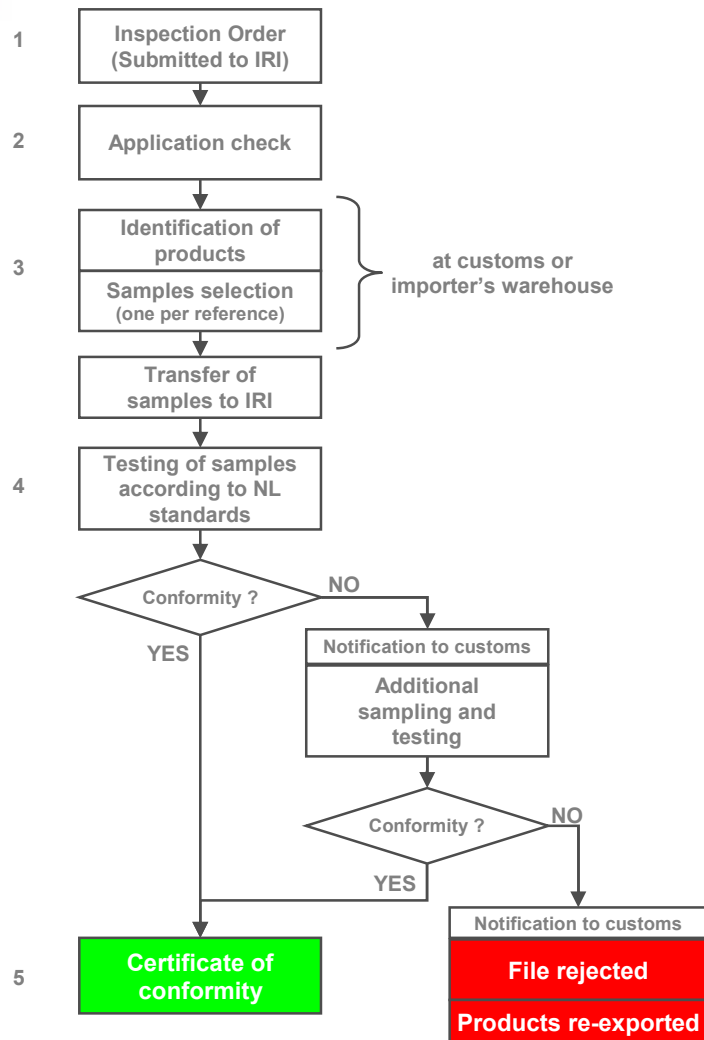


Importers should present documents detailing the products for sampling and testing at IRI laboratory.

Goods that do not conform to the Lebanese Standards will have to be re-exported from Lebanon.



> FLOW CHART



GLOSSARY

IRI : Industrial Research Institute
NL : Lebanese Standards

> PROCEDURE

1. Inspection Order

An inspection order containing details of the imported merchandise is submitted by the importer at the IRI office for each transaction subjected to the programme.

2. Documentary Check

The following information will be provided by the importer to the IRI office:

- Import details (invoice, packing list...)
- Certificate of origin

3. The sampling

The sampling will be carried out by the IRI team.

a- Visual verification with inspection order to ensure that

- Goods being shipped are identical to those identified in the documentary checks.
- The goods are in compliance with the importer's inspection order.

In case of discrepancies, the importer is requested to correct them before proceeding to the sampling procedure.

b- Sampling

Sampling will be made on random basis according to each line of product.

4. Testing

Testing will be made at IRI laboratories according to Lebanese Standards (NL).

5. Certificate Delivery

When all the test results are available, a Certificate of conformity is issued for the compliant products and a discrepancy report (copy direct to customs) for the non compliant products.